

Norwood Renovates its Clubhouse

Norwood Lawn Bowling Club was originally located opposite Coronation Park, just off Taché, for about 50 years and had the use of the Mason's Lodge there. When that lease expired, the City of Winnipeg built a green and a shed in Dakota Park, adjacent to 1212 Dakota Street where Bowls Manitoba is located. In 1991, the verbal agreement made with Norwood and Bowls Manitoba (then called Manitoba Lawn Bowling Association) was that half the shed would be used as a garage for mowers used by the City to maintain boulevards and parks for the first 10 years. **Visit us at www.bowls.mb.ca**

After a few reminders, the City removed their mowers and turned over the key to the current executive of Norwood on October 17, 2008. Between the 21st and 27th, a lot of work took place. Come spring, we'll be back at it.

Pete



First, the garage dividing wall was opened, doubling our space. Plaster dust was everywhere—even on the camera lens.



The breaker box, second telephone, exhaust fans, parking light timer and heavy-duty 200 amp service needed attention—since it had historically controlled Dakota CC ice skating rinks and parking lights as well as the shed itself. The exhaust fans were no longer necessary, one telephone only was needed, and numerous breakers were freed.



The kitchen was started, moving the counter and cabinetry and cutting a window in the surviving portion of the centre wall. This window will serve as a servery.

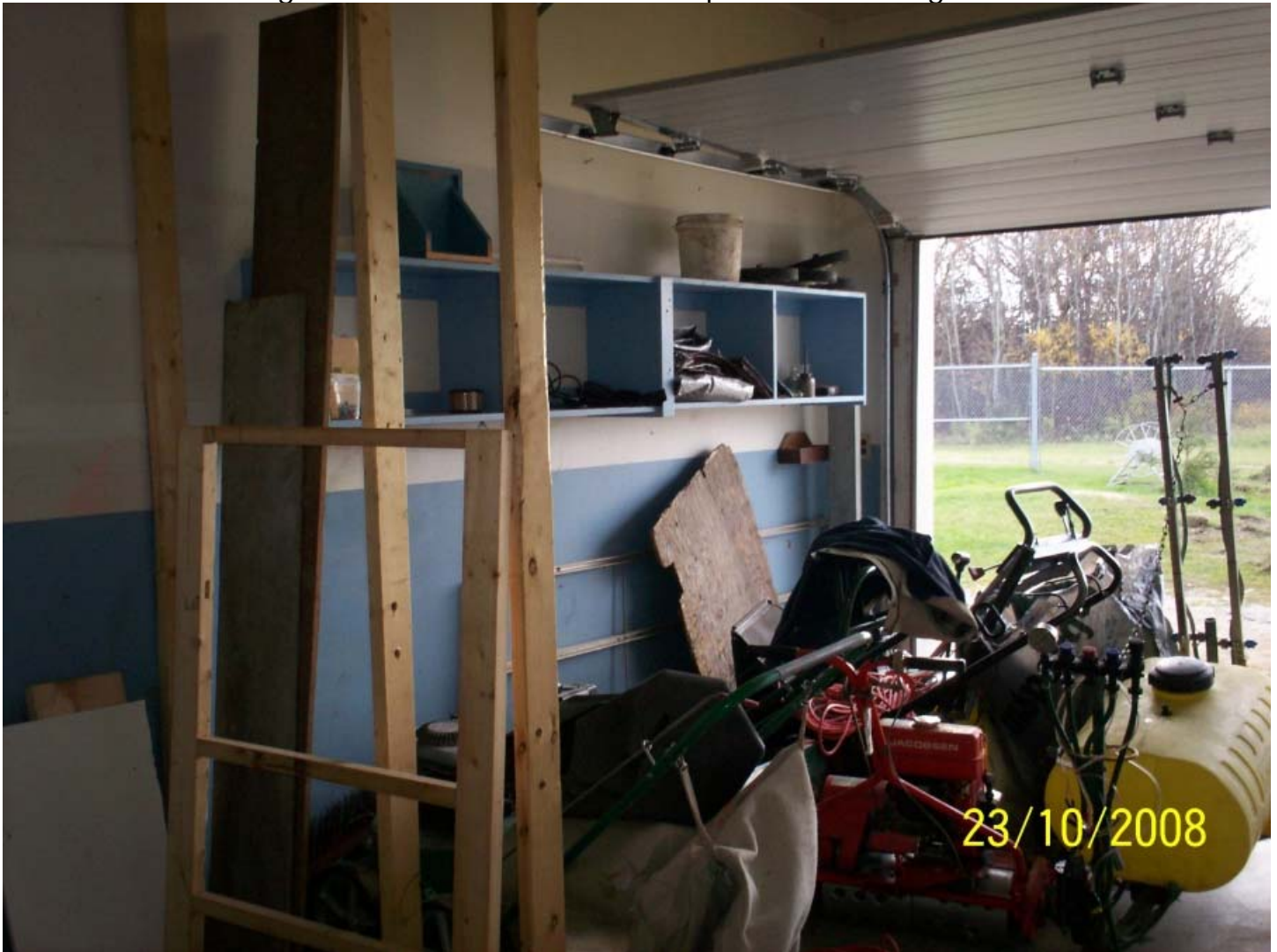


Gradually, kitchen equipment were transferred from the previous area to the new kitchen area and electrical wiring was changed to accommodate.



No, the ladder is not going to remain there!

Next, the greenkeeper's equipment needed to be moved to its new quarters. The fence that surrounds the green was extended to encompass the entire grounds to be used.



The studs for the dividing wall are started and shelving moved. It will be a mirror-image of the previous garage.



The old garage becomes the new equipment room—bowls, lockers, pushers, et al.



When setting up and taking in the green gear, no need to traipse through the main club house area.



Meanwhile back in the main room, the gyprock goes up on the divider wall and the support beam is added for additional support.

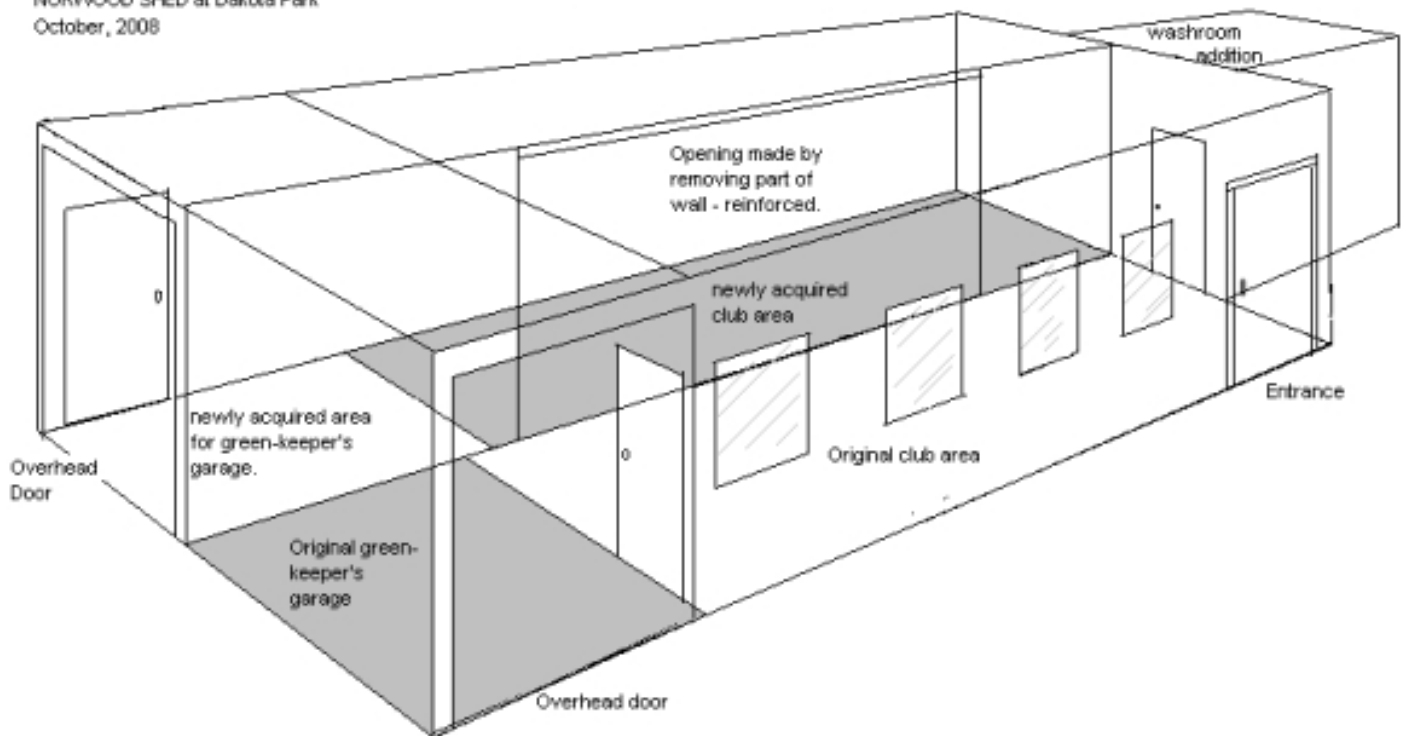


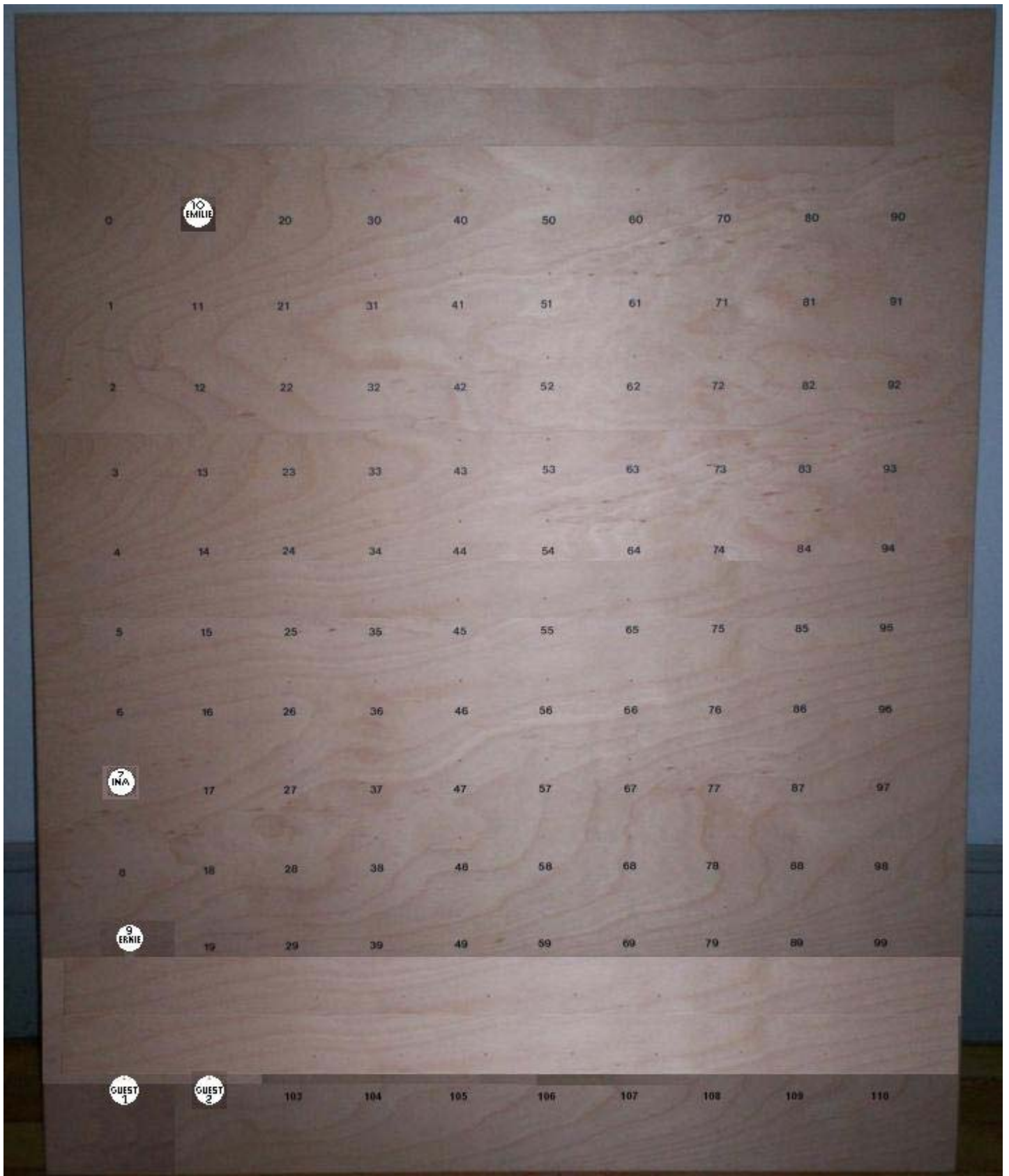
OK, so the finished wall is less than sexy until the paint goes on and that dust got my camera again! Oh, and those ladders keep posing for pictures!



And as I've said before, "this could be the start of something big." (Just ignore that ladder.)

NORWOOD SHED at Dakota Park
October, 2008





And thanks to Jack Lauder, we'll have a new tag board with room for 110 players. I just wish we had the greens to hold us all.